

阿拉斯加 ALASKA

10 晚

CRUISE ONLY

郵輪船票

COME ABOARD SALE

UP TO \$600 INSTANT SAVINGS + UP TO 40% OFF + 3RD & 4TH FREE GUESTS

德納利探索之旅
Denali Explorer

捷旅完美配套，讓您無憂出行 | 預訂機票 / 酒店 / 交通接送

啟航日期：2025年9月2日

3月2日前報名

HK\$12,098起

總噸位	裝潢年份	載客	船員	甲板
92,822 噸	2017	2200人	900人	16層

海島公主號 Island Princess



深入阿拉斯加內陸費爾班克斯

環顧世界上觀賞極光的最佳地點，則非美國阿拉斯加州的費爾班克斯莫屬。一年平均有243天會出現極光，一年中三分之二的日子裡都有機會看到極光。



50 years in Alaska

玻璃圓頂窗戶
觀光列車

玻璃圓頂火車車廂可透過便利的遊輪旅行將您帶到阿拉斯加的中心

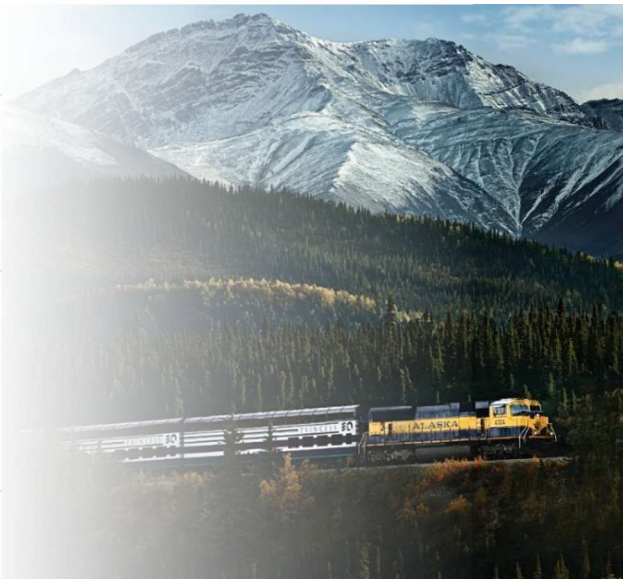
3月2日前報名指定航次可享以下尊享
船票高達6折
【名額有限·額滿即止！】



立即掃描
QR Code 與我們聯絡



日程	停泊港口	預計到達	預計離開
2/9	溫哥華, 加拿大 – 登船 Vancouver, Canada – Embarkation		1600
3/9	海上航行 At sea	--	--
4/9	凱奇坎, 阿拉斯加 Ketchikan, Alaska	0600	1400
5/9	朱諾, 阿拉斯加 Juneau, Alaska	0900	2100
6/9	史凱威, 阿拉斯加 Skagway, Alaska	0700	2030
7/9	冰河灣國家公園 (風景區巡遊) Glacier Bay National Park (Scenic Cruising)	0600	1500
8/9	學院峽灣 (風景區巡遊) College Fjord (Scenic Cruising)	1800	2030
9/9	惠提爾(安克拉治), 阿拉斯加 – 離船 ~ 迪納利 Whittier(Anchorage), Alaska – Disembarkation ~ Denali	0030	--
	離船後, 走進等候的玻璃頂觀光列車車廂, 享受獨有的直達荒野火車服務, 前往迪納利公主荒野小屋。		
10/9	迪納利, 阿拉斯加 Denali, Alaska 參加自然歷史之旅, 前往迪納利國家公園觀賞「五大動物」的風采; 駝鹿、熊、馴鹿、大角羊和狼。您可以利用當天的剩餘時間探索該地區。		
11/9	迪納利 – 費爾班克斯, 阿拉斯加 Denali - Fairbanks, Alaska 今天早上搭乘長途巴士前往「黃金之心城市」費爾班克斯。乘坐真正的蒸汽船沿著奇納河而下, 有機會體驗淘金熱的歷史、原住民文化以及阿拉斯加豐富多彩的生活方式, 包括叢林飛行員、狗拉雪橇者和原住民工匠的生活。		
12/9	費爾班克斯, 阿拉斯加 Fairbanks, Alaska 享用早餐後, 自行前往費爾班克斯機場, 旅程結束。		



價格 Price 成人佔半房	內艙房 Inside – Cat. IE	海景房 Oceanview – Cat. OE	露台房 Balcony – Cat. BE	迷你套房 Mini Suite – Cat. MD
-------------------	-------------------------	----------------------------	--------------------------	------------------------------

9月2日

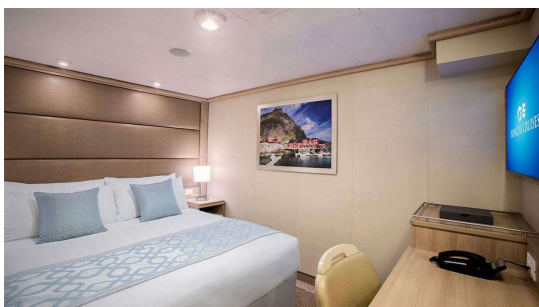
HK\$12,098起

HK\$14,998起

HK\$20,398起

HK\$22,398起

郵輪雜費約 HK\$ 2,600 | 港口稅約 HK\$ 2,920 | 以上航程及預計到達/離開時間只供參考, 如有更改, 恕不另行通知。



內艙房 Interior 約158至162sq. ft.



露台房 Balcony 約214至222 sq. ft.



海景房 Oceanview 約146至206 sq. ft.



迷你套房 Mini-Suite 約323 sq. ft.

費用包括

- 7 晚郵輪住宿並享用船上美食及娛樂設施
- 郵輪公司安排之離船後2晚指定迪納利住宿
- 郵輪公司安排之離船後1晚指定費爾班克斯住宿
- 郵輪公司安排專用列車由 安克拉治至 迪納利火車站乙張
- 郵輪公司安排專車由 迪納利 至費爾班克斯酒店接送
- 公主郵輪指定陸上觀光活動
- 旅遊業監管局0.15%印花稅

費用不包括:

- 郵輪雜費、港口稅、季節性附加費、旅行社服務費
- 需付費岸上觀光、需付費食品及飲品、船員小費、遊輪燃油附加費(如適用)、船上指定保險費(如適用)
- 護照簽證 / 簽證費用、旅遊保險、其他個人消費
- 其他不列於此列之需收費項目

備註

1. 費用以成人二人一房每位計算，並以港幣計算。單人房、三/四人同房或兒童之費用，請與本公司聯絡。
2. 費用按 **2026年1月14日** 之價格作參考指引，價格視乎供應情況並繳付訂金時為準。
3. 如航空公司或遊輪公司增收燃油附加費、其他應繳稅費，乘客須繳付差額。實際金額以船公司告示發出日期為準。有關金額將於確認後釐定並加到最終的票價。
4. 訂位時需繳付不退還之訂金。餘款必須於訂位確認後3個工作日內全數繳付。繳交費用後，恕不可作任何改動。任何姓名或出發日子之改動，將會視作取消行程處理。套票必須於出發前最少5個工作日前預訂。
5. 訂位時的乘客姓名全寫必須與旅遊證件上的全名相同，任何修改將會導致失去原來之訂位、失去原來之優惠價及導致修改費用。
6. 套票在任何情況下都不能更改，轉讓或退還款項。
7. 機票及船票可於出發前3日內領取。
8. 出發後因迫不得已之理由(如戰爭、政治動盪、天災、疫症、惡劣天氣、交通工具發生技術問題、載運機構臨時更改班次或時間表、罷工和工業行動等)更改項目而增加經營成本，本公司可向顧客徵收額外費用。
9. 如因天氣惡劣、海面狀況或各種未能預知或迫不得已的情況下(如戰爭、政治動盪、天災、疫症、惡劣天氣、交通工具發生技術問題、載運機構臨時更改班次或時間表、罷工和工業行動等)而不能依靠或更改行程，顧客同意及接受船公司或「本公司」不作出任何補償。
10. 航程中港口啟航/抵達/停靠時間會按航行情況有所調整/更改/取消，以遊輪公司最後安排為準，顧客同意及接受遊輪公司有最終的決定及不會當作違反商品說明條例，亦就此放棄向遊輪公司或「本公司」追討或索償。
11. 乘客需持有回港日期起計不少於6個月以上有效護照及入境簽證，本公司對乘客因個人證件所產生之任何問題概不負責。
12. 「旅遊業監管局」(TIA)建議乘客出發前購買綜合旅遊保險。
13. 以上費用及條款如有任何更改，恕不另行通知。其他條款按本公司「責任及細則」為準，詳情請與本公司職員查詢或瀏覽本公司網頁。
14. 以上優惠及價錢只適用於2026年1月14日或以後報名之新客戶。
15. 船公司將保留以上優惠之最終決定權。

遊輪備註

1. 客人報名時請提供有效旅遊證件之副本。
2. 遊輪上各項收費，均以美元結算，敬請注意。
3. 船上服務人員小費為 每人每晚美元 US\$ 17,迷你套房級(Mini Suite): US\$ 18,套房級(Suite): US\$ 19 於船上繳付。
4. 艙房號碼、層數及位置將於辦理登船手續時由遊輪公司派發，並以遊輪公司之最後安排為準。
5. 遊輪公司亦可在不收取額外費用下提升艙房至較高級別，客人不得異議。
6. 取消行程將按照遊輪公司罰則另將收取行政費用每位每交易計港幣\$500
7. 其他有關遊輪公司之條款及細則，均以遊輪公司英文行程書內之條款及網上刊登之條款為準，請瀏覽網頁 www.princesscruises.com
8. 本公司及遊輪公司保留權利隨時更改以上條款及細則。若有任何異議，本公司及遊輪公司保留一切最終決定權。
9. 尚有其他艙房及套房級別，詳情請與本公司職員聯絡。

Fares includes:

- 7 nights cruise onboard including accommodation, meals, entertainment & access to facilities.
- 2 night Post cruise tour Lodge in Denali by Princess Cruises.
- 1 night Post cruise tour Lodge in Fairbanks by Princess Cruises.
- Alaska Rail Service (From Anchorage(Whittier)/Denali Wilderness Lodge) by Princess Cruises
- Private Coach (From Denali to Fairbanks Hotel) by Princess Cruises
- Cruise Tour dominated by Princess Cruises
- TIA 0.15 % Levy.

Fares EXCLUDED:

- NCCF, Government Fees, Seasonal Surcharge, Travel Agent Service Fee
- Priced Shore Excursions, Priced Food & Beverage items, Gratuities, Cruise Fuel Surcharges (if applicable), Cruise Insurance Premium (if applicable)
- Passport / Travel Visa Fees, Travel Insurance, Any Personal Expenses
- Including, but not limited to, any information relating to policy of Cruise Company.

General Terms & Conditions:

1. Fares quoted are per person in Hong Kong Dollars based on double occupancy. Single/Triple/Quad or Child fare is available on request basis.
2. Fares listed on the flyer are based on quotation as of **14 Jan, 26**, it is subject to availability and to be confirmed at the time of a paid reservation.
3. Travel agent reserves the right to collect fuel supplements, applicable taxes which imposed by the carrier, even full payment has been made to the reservation. Fare difference is governed by official notification from cruise line. These amounts will be determined upon your confirmation of booking and will be added to the final fare.
4. Non-refundable deposit payment as stated by cruise line is required upon confirmation to secure a booking. Full payment must be made per cruise lines' payment calendar. No change is allowed once payment is made, amendment on names or dates will consider as cancellation. Reservation must be made not less than 5 days before departure.
5. Passengers' full name as shown on travel document is required at the time of booking. Amendment will likely result in fare difference, loss of reservation and / or incurring amendment fees.
6. Package is non-endorsable, non-reroutable and non-refundable.
7. Flight and Cruise documents can be received in 3 days before departure.
8. If a material alteration to a package tour after its commencement for reasons beyond control, the travel agency may impose any additional charge to his clients as a result of an increase in operation costs. ("Reasons beyond control" means hostilities, political unrest, natural disasters, pestilences, bad weather, technical problems to transport, changes to the frequency or timetable of any means of conveyance by its operator without advance notice, strikes, industrial action, etc.)
9. Passengers accept full responsibility for all losses and expenses due to "Reasons beyond control". Cruise Company and the travel agency will not be liable for any consequences. ("Reasons beyond control" means hostilities, political unrest, natural disasters, pestilences, bad weather, technical problems to transport, changes to the frequency or timetable of any means of conveyance by its operator without advance notice, strikes, industrial action, etc.)
10. Cruise Company reserves the right to change itinerary, timing of all embarkations/disembarkations, and cancel port of calls due to weather conditions or specific reasons. All of the changes will not be considered as against "The Trade Descriptions Ordinance, Chapter 362, Laws of Hong Kong". Passengers shall not make claim against Cruise Company and the travel agency for any recovery.
11. Passengers' passport validity is required to have at least 6 months' prior the return date and valid traveling visa(s) is granted. Travel agency will not be liable for any consequences.
12. Travel Industry Authority recommends passenger to take out the travel insurance before the journey.
13. The above Terms and Conditions are subject to change without prior notice. Travel agency reserves the rights to alter the terms & conditions and make final decision in case of any disputes.
14. The above fares and promotions are only valid to the reservation that made on or after 14 Jan, 26.
15. In case of disputes, Cruise Company reserves the right to make the final decision.

Cruise Terms & Conditions:

1. Passport copies are required for reservation.
2. Shipboard currency: US Dollars.
3. **Gratuities of US\$ 17 per person / night (Mini Suite at: US\$ 18 per person/night; Suite at: US\$ 19 per person/night)** will be charged to shipboard account automatically.
4. Stateroom assignment is subject to the Cruise Company, and on best available basis.
5. Cruise Company reserves the right to upgrade a guest or guests to higher category accommodations at no additional cost.
6. Cancellation fee of HK\$500 per person/transaction will be levied on top of cruise line's policy.
7. Other terms and conditions remain the same as laid on www.princesscruises.com
8. Fares and availability for single room, triple/quadruple or child share may available on request basis.
9. Fares of other categories available upon request.

